

## 4<sup>th</sup> International Urban Design Workshop in Lisbon - Summer 2023: Walk to Plan, Plan to Walk

Vicente del Rio

*PhD, Professor Emeritus, City and Regional Planning, Cal Poly San Luis Obispo. Visiting Professor, Universidade Lusofona de Lisboa.*

Diogo Mateus

*PhD, Professor and Coordinator, Urbanism Program, Universidade Lusofona de Lisboa.*

*In the Summer of 2023, the authors resumed the successful series of urban design summer workshops in Lisbon, Portugal where the CRP Department has a long-established relationship with the Urbanism program at the Universidade Lusófona. This was the workshop's fourth iteration and had 9 participating students from Cal Poly and from Lisbon). The following lines is a brief description of the workshop's two intensive weeks.*

The 4th International Urban Design Summer Workshop happened from June 26 to July 7, 2023, at the Universidade Lusofona (UF) in Lisbon.<sup>1</sup> Coordinated and taught by professors Vicente del Rio (CRP, Cal Poly) and Diogo Mateus (UF), the group included nine students: four from CRP, two from the University of California at San Diego, and three graduate students from UF (originally from Angola and Cape Verde).

As with the previous iterations of the workshop, besides introducing Lisbon's history and urban qualities, we focused on walking as a method to learn about place-making and a goal towards greater livability in urban projects.<sup>2</sup> On the first day, after the welcoming sessions and lunch on campus, the group visited the Museum of the City of Lisbon and its rich collection of historical and archeological artifacts. One of the museum directors, Dr. Paulo Fernandes, walked us through the city's several layers of history since pre-Roman times and talked about the impact and transformations caused by the big earthquake, fires, and tsunami of 1755. The group enjoyed seeing the large-scale physical model of pre-earthquake Lisbon and watching 3-D animations that recreated those moments. The group then followed to the Center for Urban Information, run by Lisbon's city planning department, where Dr. Helena Montiel talked about the current planning efforts before an impressive physical model of the entire city. Lastly, city planners Antonio Fologado and Marcia Lameirinhas spoke about the plans and the

community participatory process efforts currently affecting the area where the site chosen for the workshop is located. The area is highly diverse, with many immigrant groups speaking nearly one hundred languages and dialects!

The following three days included walks guided by professors del Rio and Mateus in different districts of Lisbon—such as Alfama, Baixa, Rossio, Bairro Alto, Alvalade, and Oriente—representing different historical periods and planning/design paradigms. During these walks, the students wandered around, observed, sketched, and analyzed place qualities, a method inspired by Walter Benjamin's concept of *flâneurie*. Students had to report on their observations, structuring them around seven specific urban design qualities: complexity and surprise, vitality and robustness, enclosure and linkages, transparency and vistas, legibility and coherence, architectural richness, and personalization and community values. The group also enjoyed a live demonstration of watercolor sketching by Professor Filipa Antunes (UL) at Porta do Sol, a plaza overlooking the Alfama and the Tagus River, before proceeding with their own sketching. These days' walks and findings would inspire the students to develop their projects during the workshop's design phase.

On Friday of the first week, the group started the design phase by visiting and performing a walk-through analysis of the project site and its context (Figures 4 to 6). Located along one of Lisbon's most important arterial avenues, the project site covers most of a block where Portugalia, one of Lisbon's most well-known beer factories and beer garden, was located. Although most of the site has been vacant for years, the remains of a historical industrial building, and a renovated annex still functions as a restaurant and beer place. There is also a vacant 10-stories office building on the site. The city and the community are intensely

<sup>1</sup> See details of the workshop and final products are available at <https://www.ud-workshop-lisbon.net/>

<sup>2</sup> For a discussion of this methodology see: del Rio, V. (2015). *Urbanity, the Flaneur, and the Visual Qualities of Urban Design* (in V. del Rio (ed.), *City Fragments: Reflections on Urbanism and Urban Design*; San Luis Obispo/Rio de Janeiro: KDP/RioBooks).



Figure 1: Professor Filipa Antunes demonstrating watercolor sketching at Porta do Sol. (photo: V. del Rio)



Figure 2: Professor Diogo Mateus during the walking tour of Alvalade's modernist sector. (photo: V. del Rio)

interested in preserving historical remnants and revitalizing the block with residential and community-serving uses. The collected information was compiled, discussed, and organized back on campus. On Saturday of the first week, guided by Professor del Rio, the group visited the beautiful hill town of Sintra and its medieval castles and palaces. On Sunday, a free day, some of the students went to the beach in Cascais while others just relaxed in Lisbon.

The second week consisted of an intense design charrette. Divided into two teams, with a balanced mix of participants of different backgrounds and nationalities, the group conducted a quick SWOT discussion and analysis before proceeding to the concept development phase. The teams then defined their proposals for developing the site. They included a vision

statement, objectives, design ideas, concept diagrams, and a final design concept, including a site plan, cross sections, a SketchUp 3D model, and representative pedestrian views. The workshop culminated with the teams presenting their proposals to faculty and local planners in PowerPoint and poster formats and submitting a final report, which included their observations on urban design qualities as collected in the first week and their complete analysis and proposal for the project site. The proposals included feasible, culturally, and contextually appropriate ideas for Lisbon and the site's socially and functionally complex milieu. Once again, Lisbon was a fascinating learning laboratory where history, culture, accessibility, sound design, and social and ethnic mix combine to generate one of the world's most attractive and livable cities.

Figure 3: Sketch of Castelo São Jorge and Alfama from Miradouro Don Pedro de Alcantara, by Owen Underwood (CRP).



Figure 4: View from Porta do Sol, by Jennifer Hugoo (CRP).







Figure 4: Aerial view of the project site. (source: Google Earth)

- 1: Existing Portugalia restaurant
- 2: Deteric historic building
- 3: Vacant office tower



Figure 5: Corner of Avenida Almirante Reis and Rua Pascoal de Melo. The Portugalia restaurant and, on the left, the deteric historic building. (photo: V. del Rio)

Figure 6: View of the interior of the project block looking south. The historic building shows on the left and the vacant office tower on background. (photo: V. del Rio)



## PLAN TO WALK + WALK TO PLAN PORTUGALIA: SAFEGUARDING COLLECTIVE MEMORY

### Vision Statement

Maintain design precedents by preserving and enhancing the historic site features. Create a space in which both residents and visitors are able to engage in varied activities which promote the local economy and culture.

### Objectives

- To acknowledge cultural diversity through design
- To preserve the historical identity of the environment and the site
- Promote the sociability, comfort and creative leisure of pedestrians ensuring a better connection between places and pleasant mobility

### Development Program

<ul style="list-style-type: none"> <li>■ Parking                             <ul style="list-style-type: none"> <li><input type="checkbox"/> Underground</li> <li><input type="checkbox"/> Adjacent to the site</li> </ul> </li> <li>■ Residential                             <ul style="list-style-type: none"> <li><input type="checkbox"/> Multi-family apartments</li> <li><input type="checkbox"/> Office</li> <li><input type="checkbox"/> Existing building</li> <li><input type="checkbox"/> Cafeteria/outdoor seating</li> </ul> </li> <li>■ Commercial                             <ul style="list-style-type: none"> <li><input type="checkbox"/> Retail/Local</li> </ul> </li> </ul>	<ul style="list-style-type: none"> <li>■ Green space                             <ul style="list-style-type: none"> <li><input type="checkbox"/> Public park</li> <li><input type="checkbox"/> Children's playground</li> </ul> </li> <li>■ Plaza/public space                             <ul style="list-style-type: none"> <li><input type="checkbox"/> Landmark statue/center piece (representative of culture)</li> <li><input type="checkbox"/> Public seating options (benches on Main Ave)</li> <li><input type="checkbox"/> Access from sidewalk and building interiors</li> </ul> </li> <li>■ Tourism                             <ul style="list-style-type: none"> <li>Museum, Restaurants, Cultural Landmark</li> </ul> </li> </ul>
---	--

### Concept Diagram

### Site Plan

### Pedestrian views

### Street Section

LU	Use	Footprint	Floors	Total Sft
VI	Restaurant	7,276 sq ft	2	14,552 sq ft
V	Museum	9,126 sq ft	2	18,252 sq ft
I	Office	17,772 sq ft	5	107,772 sq ft
II	Residential/Commercial	6,890 sq ft	4	27,560 sq ft
III	Residential/Commercial	6,606 sq ft	5	44,030 sq ft
	Green Space	13,020 sq ft	NA	13,020 sq ft
VII	Parking	31,868 sq ft	1	31,868 sq ft

Site Square Footage	50,000 sq ft	Site FAR	2.23
---------------------	--------------	----------	------

Figure 7: Poster with the proposal by Team A (Owen Underwood, Dania Garcia, Miriam Sullivan and Edson Lourenço).



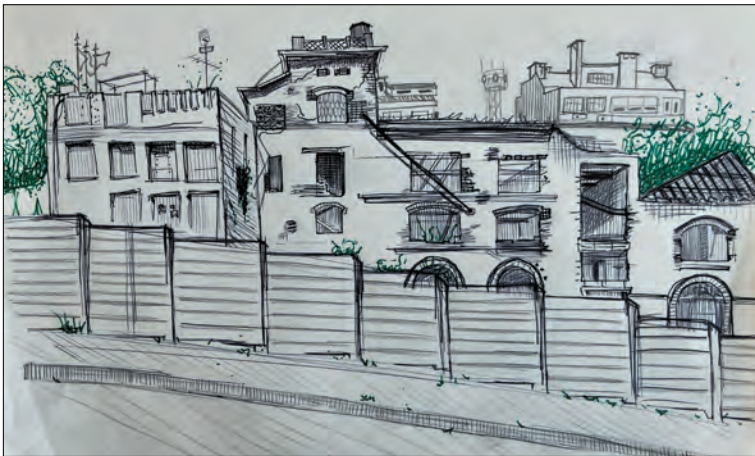


Figure 8: Partial view of the project site and existing buildings from Rua Antonio Pedro, by Miriam Sullivan (CRP).

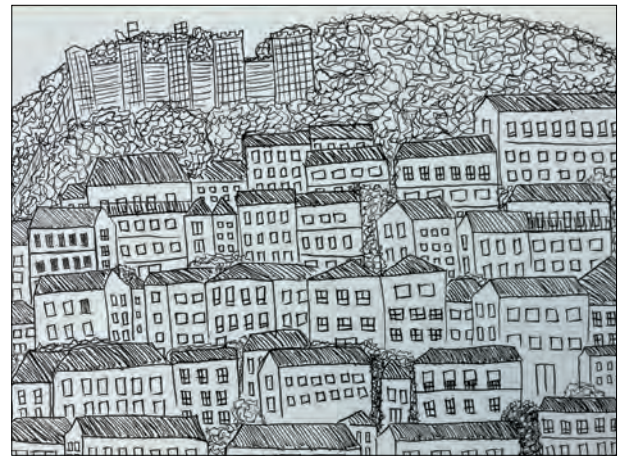


Figure 9: Sketch representing the Alfama and Castelo Sao Jorge, by Emily Deggeller (CRP).

# ULYSSIPPO

## PLAN TO WALK + WALK TO PLAN

Ulyssippo will enhance the Arroios neighborhood by creating a safe, accessible, and attractive community-oriented space for residents and visitors alike. The development will take the existing buildings on-site and use them to create housing for all income groups and lively spaces to foster social interactions and experiences while maintaining the historic characteristic of the city. Ensuring easy access to a multiplicity of activities located within the site will improve quality of life for all while supporting a local economy and connected community.

**1** View of proposed shelter and new building from Rua Antonio Pedro.

**2** View of way to central space from Rua Antonio Pedro.

**3** View of Portugal from Avenida across the site.

1. Homeless Shelter\*    4. Portugal Restaurant\*    A. Private Courtyard for Shelter    D. Plaza for Marketplace

2. High-Density Residential    5. MarketPlace\*    B. Semi-Private Courtyard for Residents    Entrance to Underground Parking

3. Mixed Use Building    6. Mixed Use Building    C. Small Plaza for Retail    Existing Building/Infrastructure

Permeable Vies

0 30 60 90 meters

**View towards Southwest**

**View towards Northeast**

**BRING COMMUNITY TOGETHER**  
THROUGH ENGAGING AND LIVELY PUBLIC AND PRIVATE SPACES

**CREATE AN ACTIVE SPACE**  
(BY MAKING IT ACCESSIBLE, ATTRACTIVE, AND INVITING)

**PROVIDE HOUSING OPPORTUNITIES**  
(THAT ARE AFFORDABLE AND AVAILABLE TO ALL INCOME GROUPS)

Building Number	Number of Units	Units Ground Floor	Units Upper Floors	Footprint (sqm)	Total (sqm)
1	2	Shelter Units	Residential Units	1,470	1,470
2	2	High-Density Residential	High-Density Residential	1,100	1,100
3	2	Mixed Use	Mixed Use	1,100	1,100
4	2	Mixed Use	Mixed Use	1,100	1,100
5	2	Mixed Use	Mixed Use	1,100	1,100
6	2	Mixed Use	Mixed Use	1,100	1,100
<b>Total of Buildings</b>				<b>5,270</b>	<b>5,270</b>

Unit Type	Building Number	Total of Buildings	Percentage of Total of Buildings
Shelter Units	1, 2	4	0.07%
High-Density Residential	2, 3, 4, 5, 6	10	19.2%
Mixed Use	3, 4, 5, 6	8	15.2%
Other	1	1	1.9%
<b>Total</b>		<b>23</b>	<b>43.8%</b>

**Section AB**

Ruben Domingos, Emily Deggeller, Jennifer Hugoo, Audrey Taylor, Liliana Costa      Professor Vitorino del Rio

Figure 7: Poster with the proposal by Team B (Jennifer Hugoo, Emily Deggeller, Audrey Taylor, Ruben Domingos, and Liliana Costa).