

V International Summer Urban Design Workshop

Revitalization of Brown Fields at the Tejo River, Lisbon

Monday, June 24 to Friday, July 5, 2024

Vicente del Rio, PhD.: academic coordinator
Fernando Nunes da Silva, PhD.: local coordinator
Ana Moraes de Sá, PhD.: local coordinator



- Workshop is hosted by the Instituto Superior Técnico de Lisboa and FUNDEC, at the Universidade de Lisboa
- The IST has three campuses. We will be at the main campus, Alameda
- The IST offers more than 20 majors. Undergraduate and graduate degrees (MSc and PhD).
- Ranked # 1 and 2 in Portugal for several years, and a top ranked institute in Europe.
- More than 11,000 students



The Alameda and the IFT campus at the top



At the other side of the Alameda, the beautiful Fonte Luminosa.



The campus of the Instituto Tecnico de Lisboa



Location of city of Project Site: Barreiro



The City of Barreiro



Project Site: Quimiparque, Barreiros
Old industrial site





Views of the project area



LISBON

1

5

2

3

4

Lisbon

1. International airport
2. University campus
3. Alfama and Castle
4. Praca do Comercio
5. Site of the EXPO 98

2 mi

Week 1 (June 24 to 28)

- Welcoming: Visit the local history museum and Lisbon's Center of Urban Information.
- Presentations and walking tours to several neighborhoods representing different planning/design historical paradigms. Work: Identification of major urban design qualities.
- Presentation on Cidade Tejo, the larger research project on urban development along the Tejo River.
- Presentation on the town of Barreiro and the project area, visit to the site and context, site analysis.

Weekend (optional)

- Visit to Sintra.
- Lazy day on the beach or busy day shopping.

Week 2 (July 1 to 5)

- SWOT analysis, discussions, vision and concept development.
- Project and program development.
- Final presentation and discussions.

Week 1

Visiting the Museum of Lisbon and learning about the city's historic development





Week 1

Walking tours throughout representative areas to learn about urbanism and urban design qualities.



Week 1



**Watercolor sketching demonstration
by professor Filipa Oliveira at Porta do Sol, Lisbon**

Week 1

Sketching places exercises



Week 2

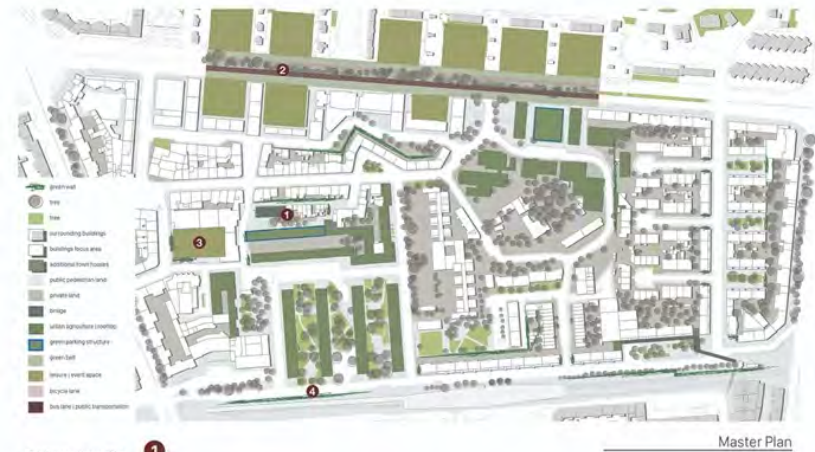
Final presentation of urban design proposals: powerpoint, poster, and report.



LISBON: ALVALADE | REVITALIZATION

Bringing life, activity, and value back to an underserved area.

Hannah Teuch | Kyle Ferguson | Nishtha Kandikoppa



Existing one story parking garages may be converted into a space efficient parking structure with urban farming on the roof. This will help meet the need for parking, provide public activities and better connect the various elevations in the site.



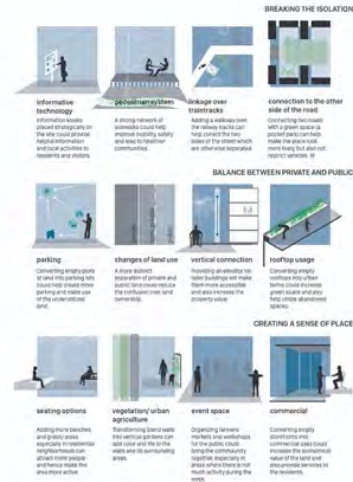
Avenida Estados Unidos da América is one of the main arterials in our project site dividing the area and preventing public connections. Due to the street's lower elevation to adjacent buildings, there is a possibility to cap the road and provide access to public transportation.



Underutilized plaza will be revitalized to include music and other recreational activities bringing life to an otherwise quiet area.



Blank walls throughout the site prevent transparency and are unpleasant to the eye. We propose to include greenways/vertical farming on blank facades, especially along the rail line to help with sound proofing, carbon reduction, and aesthetic value.



Week 2

Examples of past work



Snapshots of places we will visit



View from top of Eduardo VII Park

Towards the valley of Baixa de Lisboa and the Tagus River. On the left, the Alfama and the Castle São Jorge. On the right, the Bairro Alto.



Baixa Pombalina and Praça do Comércio



Alfama and St. George Castle







Multi-modal Orient Station and the redeveloped area from the Expo 98



Saturday visit: Sintra

16 miles / 45 min

app. 7 euros (or less if using Zap)

View toward the Moorish Castle
from the King's Hunting Palace



The Moorish Castle in Sintra



*A Cal Poly group at the top of
the Moorish Castle wall with
the Pena Palace at the back.*

Pena Palace, Sintra



Estimated total cost app. US\$ 3,500

- Program registration/tuition: € 350.00 (app. US\$ 400)
- Includes an Official Certificate of Completion.
- The program can be used for CRP 400 (Independent Study elective)

Personal expenses (*rough estimates*):

- Airfare: LA/Lisbon/LA: app US\$ 1,200
- Accommodation: (depends on type) Hostel US\$ 25 per night
- Passport: US\$ 190
- International travel health insurance: app. US\$ 35.00
- Food: app US\$ 25 per day
- Public transportation: US\$ 8 per day
- Train to Sintra: US\$ 8 round trip
- Tickets to local attractions and museums

OBS: Please contact former CRP participants for more precise estimates on expenses.

**For more information
and registration:**

Vicente del Rio: vdelrion@calpoly.edu

www.ud-workshop-lisbon.net